

**2. Fiber Disease, Intestinal Pseudo-Parasites, Delusional Parasitosis & the Self-Assembly of Nano-Bots. The Multiple Facets of the Morgellon Condition Explained.**

Including a guideline for diagnosis and a therapeutic protocol.

*Harald Kautz,  
CEO Aquarius Technologies,  
member of timeloopsolution consortium*

**Abstract**

**<English> Visual and microscopic analysis of Morgellon-related documentation revealed the complete life-cycle of a fungus that shows characteristics of the order of the *entomophthorales*. As typical for this order of fungi, Morgellons, that are growing in the tissue and in some cases exit via the skin, create pseudomorphous fruiting bodies, following secondary genetic clusters. Derived from the few identifiable anatomic details, the Morgellon-related fruiting bodies seem to follow the morphogenesis of a human-spider crossbreed. Regarding the medical condition a system of differential diagnostics is proposed. A curative strategy is developed based on principles of environmental medicine, including solutions contributed by radionics.**

**Abstract**

**<Deutsch> Die visuelle und mikroskopische Analyse von Morgellon-bezogenen Dokumentationen haben den vollständigen Lebenszyklus eines Pilzes mit Merkmalen der Ordnung der *entomophthorales* offengelegt. Typisch für diese Ordnung, formen Morgellons, die zunächst das Gewebe befallen und bei manchen Patienten aus der Haut austreten, im menschlichen Magendarmtrakt pseudomorphe Fruchtkörper, die einem sekundären genetischen Cluster folgen. Ausgehend von den wenigen ausgeprägten anatomischen Merkmalen folgt der Morgellon-Fruchtkörper der Morphogenese einer Mensch/Spinnen-Kreuzung. Was den rein medizinischen Befund betrifft, wird ein differentialdiagnostisches System vorgeschlagen. Auf der Grundlage der Milieumedizin wird eine Strategie zur Heilung des Krankheitsbildes entworfen.**

Keywords: <Morgellons> <Bovine Digital Dermatitis> <Intestinal Parasites> <Darmparasiten> <Delusional Parasitosis> <Eingebildete Parasitose> <Dermatozoenwahn> <Autism> <Candida> <Lyme Disease> <Borelliose> <ADS> <ADHS> <Asperger> <Autismus> <Rope Worms> <environmental medicine> <Milieumedizin> <timeloopsolution> <Harald Kautz> <timeloop protocol> <timeloop Protokol>

## **ENVIRONMENTAL MEDICINES APPROACH TO GEOENGINEERING-INDUCED DISEASE**

### **Content**

<b>1. Introduction / Summary of Findings.....</b>	<b>3</b>
<b>2. Method .....</b>	<b>5</b>
<b>3. Results of the visual approach and further investigations .....</b>	<b>6</b>
<b>3.1. The Morgellon Life Cycle.....</b>	<b>6</b>
<b>3.2. Morgellon infection and autism.....</b>	<b>17</b>
<b>3.3. Suggesting an Interpretation of the Aspect         of Delusional Parasitosis.....</b>	<b>17</b>
<b>4. Differential Diagnosis .....</b>	<b>21</b>
<b>5. Discussion.....</b>	<b>22</b>
<b>6. Acknowledgements .....</b>	<b>24</b>
<b>7. Literature Cited.....</b>	<b>25</b>
<b>8. Graphics.....</b>	<b>25</b>

Please also regard the other publications of this series:

### **ENVIRONMENTAL MEDICINES APPROACH TO LIFESTYLE-DISEASE**

- 1. Do Autism-related Rope-Worms and Morgellon-Fruiting Bodies Display the Same Biotechnological Signature?**
- 2. Fiber Disease, Intestinal Pseudo-Parasites, Delusional Parasitosis & Autism. The Multiple Facets of the Morgellon Condition Explained.**  
  
Including a guideline for diagnosis and a therapeutic protocol.
- 3. TSE & Creutzfeld Jakob as a Result of Airborn Piezoelectric Nanocrystals, Organophosphates, Heavy Metal Poisoning and Malnutrition.**
- 4. Available Diets, Supplements and Remedies to Counteract Candida-Related Disease, Degenerative Old Age Disease and Conditions out of the Autism-Spectrum.**

## **1. Introduction**

The Morgellons- or fiber-disease (when appearing on farm animals like cows described as bovine digital dermatitis) is still repudiated by mainstream medicine and most state-authorities<sup>i</sup>. The actual biology behind this condition is inadequately researched. Due to the photographic work of different Morgellon victims who documented Morgellon-related phenomena on thousands of pictures, it was possible to describe the full Morgellon life-cycle. The visual approach identified mycelium, peduncular base, different stages of fruiting body growth, spores and spore-carrying organs. At the same time biochemical analysis and DNA fragmentation shows a synthetic life form, described as:

A disease in which individuals have the growth of fibers from their skin that burn at 1,700 degrees F and do not melt<sup>ii</sup>. A private study to determine the chemical and biological composition of these fibers has shown that the fibers' outer casing is made up of high density polyethylene fiber (HDPE). The fiber material is used commonly in the manufacture of fiber optics. There is no history of the individual in that industry or coming into contact with this material. It was further determined that this material is used throughout the bio nanotechnology world as a compound to encapsulate a viral protein envelope, which is composed of a viron (1/150th times smaller than a virus) with DNA, RNA, RNAi (mutated RNA) or RNAsi linear or ring plasmids for specific functions<sup>iii, iv</sup>. Toxicological pathology identification of tissue biopsies from an individual diagnosed with Morgellons revealed the presence of continual silica or glass tubules with the presence of silicone<sup>v</sup>. (Ref. for the entire paragraph)<sup>vi</sup>.

Regarding the visual analysis, it seems that we have to deal with a biotechnologically engineered fungus with the ability to assimilate extrinsic DNA and, by this, making its fruiting body mimic the morphogenesis of other species. Due to this quality, the biological order of the fungus could be determined as very likely being derived from the order of the *entomophthorales*. Regarding the chemical analysis of the fibers it seems that there is some form of artificial casing utilized to seed the infection under extreme conditions, and/or make it survive as biomechanical components even when the bio-form itself is destroyed by the immune system. The function of those elements can be understood as components of self-assembling transhumanistic technologies, described as plasmonic fibers (mycelium) and hexagonal plasmonic photonic crystals (spore-containing organs) as read/write units forming a microwave/biophoton-communication interface.

---

<sup>i</sup> <English> <http://emedicine.medscape.com/article/1121818-overview>

<German> [http://www.psychosoziale-gesundheit.net/pdf/faust1\\_dermatozoenwahn.pdf](http://www.psychosoziale-gesundheit.net/pdf/faust1_dermatozoenwahn.pdf)

<sup>ii</sup> Dr. Hildegard Staninger: FAR-INFRARED RADIANT HEAT (FIR RH) TYPE REMEDIATION FOR MOLD and OTHER UNIQUE DISEASES, RIET-1. Industrial Toxicologist/IH & Doctor of Integrative Medicine Integrative Health International, LLC 12235 E. Centralia St. Lakewood, CA 90715. © October 18, 2006 Presented at the NREP Annual Conference in Nashville, TN, October 18th, 2006 for the National Registry of Environmental Professionals. Glenview, IL, USA.

<sup>iii</sup> Twietmeyer, Ted. Is Morgellons Disease Caused by Chemtrail Spraying? <http://www.rense.com/general71/mmor.htm> © May 14, 2006.

<sup>iv</sup> 21. Staninger, Ph.D., Hildegard. Private Funded Independent Study on the Identification of Chemical and Biological Composition of Fibers from Morgellon Diagnosed Patients. Integrative Health International, LLC. Lakewood, CA © October 5, 2006. Laboratory Report: Fiber made of High Density Polyethylene (HDPE).

<sup>v</sup> Leicester. Virus Replication. Microbiology @ Leicester: virology: Virus replication. Updated: October 22, 2004. <http://www.-micro.msb.le.ac.uk/3035/3035Replicaiton.html>.

<sup>vi</sup> Karjoo, M.D., Rahim. U.S. Silicon Breast Implant Studies. American Medical Diagnostic Laboratories, Inc. Santa Ana, CA. © 1994

The order of the *entomophthorales* is widely genetically engineered as myco-insecticides and shows exactly this property of pseudo-morphogenesis. The morphogenesis of the fruiting bodies found in the intestines of Morgellon-patients – as to be shown – show characteristics of a human/spider-crossbreed. Although this cutting edge biotechnology cannot be found in non-classified publications, the basic toolkit is described in standard literature<sup>vii</sup> about genetic engineered fungi. The literature both describes the ability of fungi to carry secondary genetic clusters as well as the possibility to introduce any extrinsic DNA with the help of *agrobacterium tumefaciens*.

There is a secondary aspect of the disease from which the term delusional parasitosis is derived: the feeling of crawling insects on and/or under the skin. One patient reported that she developed motherly instincts toward the Morgellon fruiting bodies, including sadness about their monthly “abortion”. The fact that these fungi have the ability to form embryo like “bodies” with real humanoid DNA clusters inducing motherly instincts lead to the idea that there might be some kind of ethereal or energetic body created alongside with the fruiting body, that has the ability to dissociate from the fungus tissue and interact with the human in a similar way one would expect it by a demon or attaching spirit. As fringe as this idea is, it would explain the common feeling of having invisible insects crawling on and through the body, that many Morgellon victims report.

I am aware that many people deny the existence of a spiritual realm. However, one might consider that all beings show attributes of self-organization. Thus when we say “demon” or “spirit” we are talking about the organizing field, whatever physics it might be composed of. Contemporary bio-photon research<sup>viii</sup> as well as opto-genetic research proposes the idea that these fields are binary phase conjugate replica-waves being composed of annihilated bio-photon pairs counter-sent by two DNA-strands, adding up to fractal scalar-potential eddies that function as the blueprint of life. These eddies actually displays the fractal order of biology. This understanding of biology is based on the full notation of the original Maxwell equations including the transversal, longitudinal and scalar forms of electromagnetic waves, opening a forth dimension with the possibility to form scalar-potential eddies as the higher-dimensional blueprint of life. Theoretically, photons in the annihilated state have the ability to form circular field structures that could remain stable even when detached from the DNA cluster, which would hint to the possibility that a part of the morphogenetic field has the ability to survive cell-death and become a demon-like entity. The premises for such an event would be the up-concentration of scalar potential, to create a local space-time-distortion strong enough to stabilize the circular field structure. This hypothesis is supported by the experience of one patient, which during the monthly abortion of the fruiting body experienced a sensation of energy being sucked out of the forehead, that drained her energetically close to the point of fainting, while the stream of energy was flowing into the direction of the intestines.

This gives a scientific access to the aspect described as delusional parasitosis; this feeling expressed by Morgellon victims of hosting crawling insect-like beings that live and move invisibly on and under their skin. Instead of prescribing psycho-pharmaceutics we tried to gather as much information about these phenomena from as many patients as possible, to be able to determine repeating patterns. Some of these repeating patterns, that could be determined, link to the contemporary black magic tradition.

---

<sup>vii</sup> Handbook of Fungal Biotechnology. Second Edition, Revised and Expanded. Edited by Dilip K. Arora.

National Bureau of Agriculturally Important Microorganisms New Delhi, India Associate Editors Paul D. Bridge British Antarctic Survey Cambridge, United Kingdom Deepak Bhatnagar US. Department of Agriculture NewOrleans, Louisiana, U.S.A. MARCEL MARCEL YORK BASEL © 2004 by Marcel Dekker, Inc.

<sup>viii</sup> Bajpai Ram P., Bajpai PK, Roy D.: Ultraweak photon emission in germinating seeds: a signal of biological order. J Biolumin Chemilumin.1991 Oct-Dec;6(4):227-30. See also: Bajpai Ram P.: Quantum coherence of biophotons and living systems. Indian J Exp Biol. 2003 May;41(5):514-27.



## **2. Method**

The research described within this paper is partly empiric, partly hermeneutic. Due to limited funding it was more productive to examine one case-study in detail. The author personally accompanied one Morgellon victim for several months, investing 2-3 days a week to be able to observe all aspects of this condition in person, emotionally, mentally and medically. The declared goal of this period of research was to accompany this patient until healing was accomplished. The medical examination and treatment was done by Ekkehardt Sirian Scheller †. His work is now continued by the Institut für Infopathie UG in Radolfzell, Germany. Scheller was specialized on dark field microscopy, environmental medicine and radionics. The following is an anecdotal case, the medication described below being used is not meant to be understood as a healing protocol. Still, in this single case significant improvement was achieved after 5 months. The personal diagnosis revealed an antecedent of cryptopyroluria, candida-disorder, liver malfunction, over-acidification, heavy metal poisoning and Lyme disease accompanying the Morgellon condition. The healing took place after the underlying conditions were healed with given treatments. Cryptopyroluria was treated with mineral and vitamin supplements (Core/biopure.eu), over-acidification and heavy metal pollution with Zeolite, candida and Lyme disease with individually adjusted radionics. An essence of the detox-concept combining supplements and radionics that was used in this anecdotal case is today available in the products Super Zeolith (Morgellon prophylaxe) and quinteXsence (heavy metal detox) both produced by biopure.eu. The ethereal aspect of sensing crawling creatures under the skin was treated with Black Goo Globuli produced by biopure.eu. At the same time a strict diet was prescribed, avoiding meat, milk products, alcohol, refined sugar, coffee and all products with glyphosate contamination. Additional to the medical antecedent, due to her profession as a hairdresser the patient had suffered from a high exposure to chemicals and heavy metals. And a few years prior, the patient was without her knowledge victimized in a black magic ceremony.

Starting from these findings, we chose four other Morgellon victims to verify whether these findings were systemic or random. The interviews were conducted per eMail and relied on the information given to these patients by their doctors. Judging from these 4 cases, apart from the explicit exposure to chemicals, all findings including the victimization by black magic rituals turned out to be systemic with a high significance. In general, the patients showed a psychological affinity for the victim role.

As a last step we exchanged data with different researchers that work on other conditions that are also linked to acidification and heavy metal intoxication, to verify whether our protocol can be further improved. By doing this, a link between Morgellon infections and autism showed up. Discussions with physicians treating autistic children revealed that in a single case the so-called rope worms found in the intestines of autistic children was associated with the same spore-containing hexagons as Morgellons. DNA fragmentation of the rope worms done in Russian research showed partly human, partly insect, partly worm-DNA, microscopy showed cell structure typical to vertebrates, while chemical analysis showed plant tissue only<sup>ix</sup>. Also, in a similar way Morgellon-victims visualize spiders, the snake appears to be a core topic of autistic children. It seems likely that we actually deal with a biotechnological concept similar to Morgellons, in which a fungus assimilates DNA of a human/snake crossbreed as its secondary genetic cluster. A comparison of our Morgellon protocol with the methods developed to heal autism lead to an optimization of our protocol, and in return we expect that our findings and our protocol will be able to improve autism treatment.

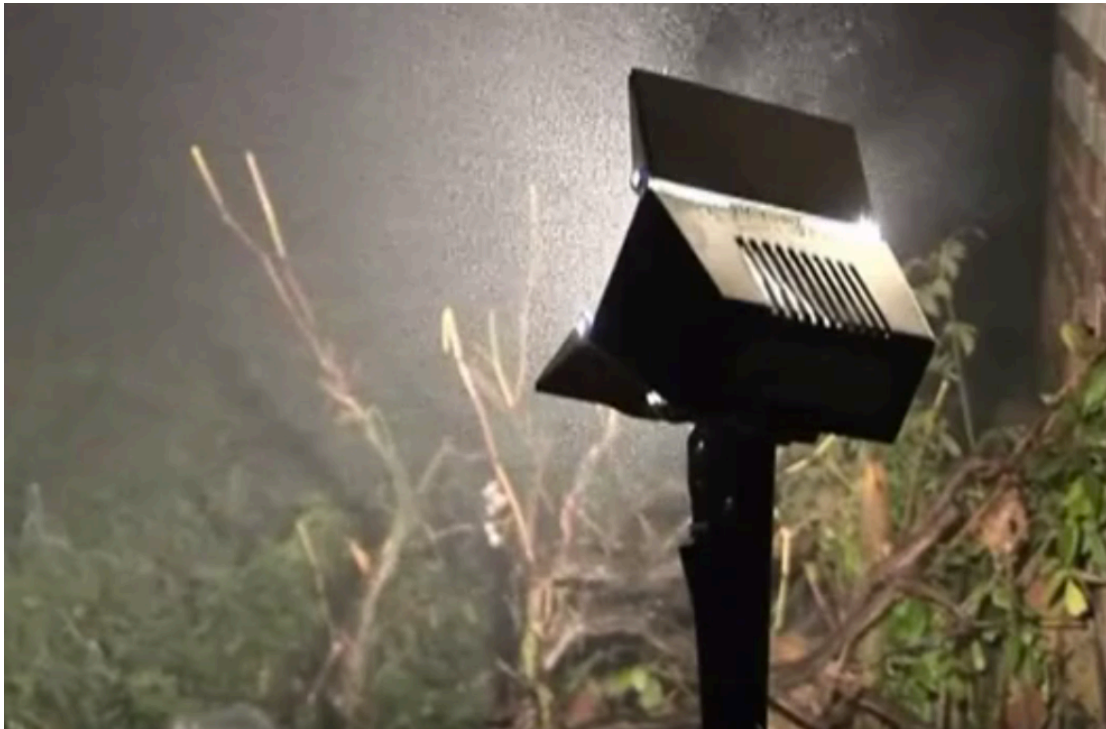
---

<sup>ix</sup> Development stages of the “rope” human intestinal parasite Originally submitted to arxiv.org on Jan. 14, 2013, <http://arxiv.org/abs/1301.2845> Alex A. Volinsky, Ph.D., Nikolai V. Gubarev, Ph.D., Galina M. Orlovskaya, RN-C, Elena V. Marchenko, M.D., Ph.D.. Independent researcher Occupational Safety Ltd. (OOO“Bezopasnost Truda”), 32 ul. Koli Tomchaka, suite 14, St. Petersburg 196084, Russia, Department of Surgery, St. Petersburg City Hospital.

### **3. Results of the visual approach and further investigations**

#### **3.1. The Morgellon life cycle**

The following approach to understand the Morgellons life cycle was fully visual. At the time when the study was done the link to autism was not yet identified. It was based on the work of different Morgellon patients who documented Morgellon related symptoms being found in nature, being extracted from their skin or from the lower intestines. We just had a close look at all these Morgellon related phenomena, tried to find forms that occurred over and over again, and put them in a logical order.



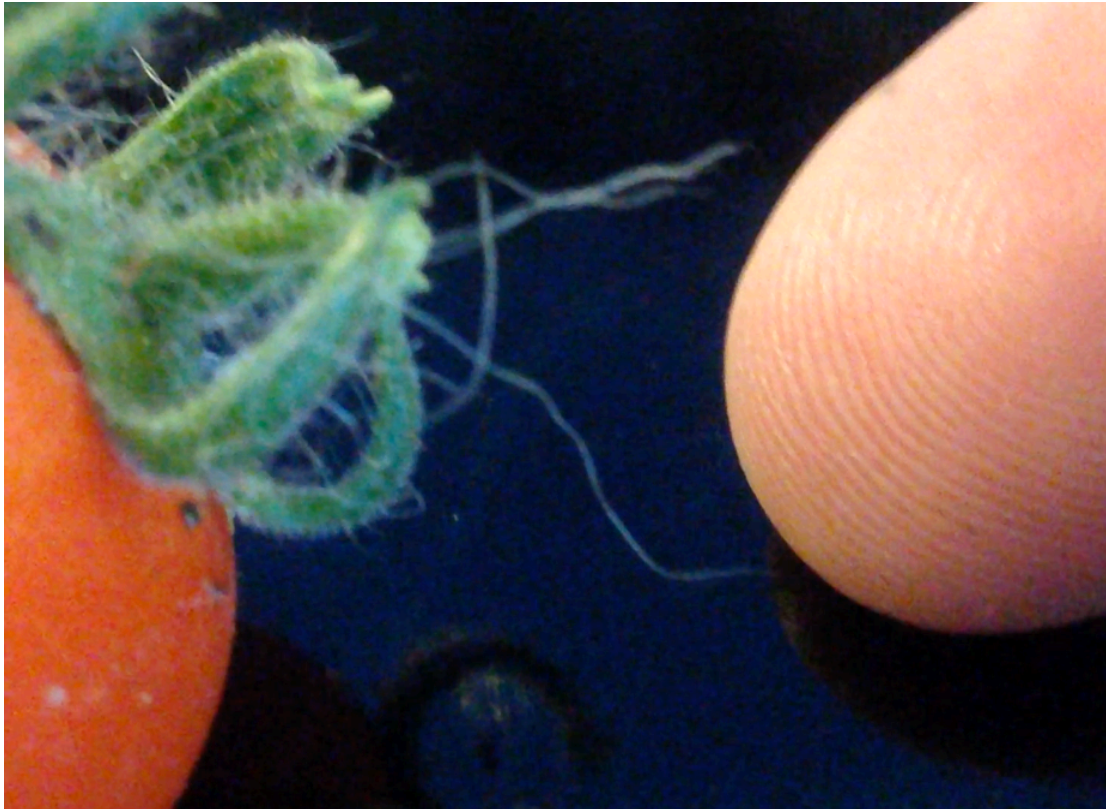
**fig. 1: Many people aware of the Morgellon-topic report fibers to be air born in high numbers, described as being luminescent in black light. It is easy to imagine that infections can occur by breathing these fibers in.**

---

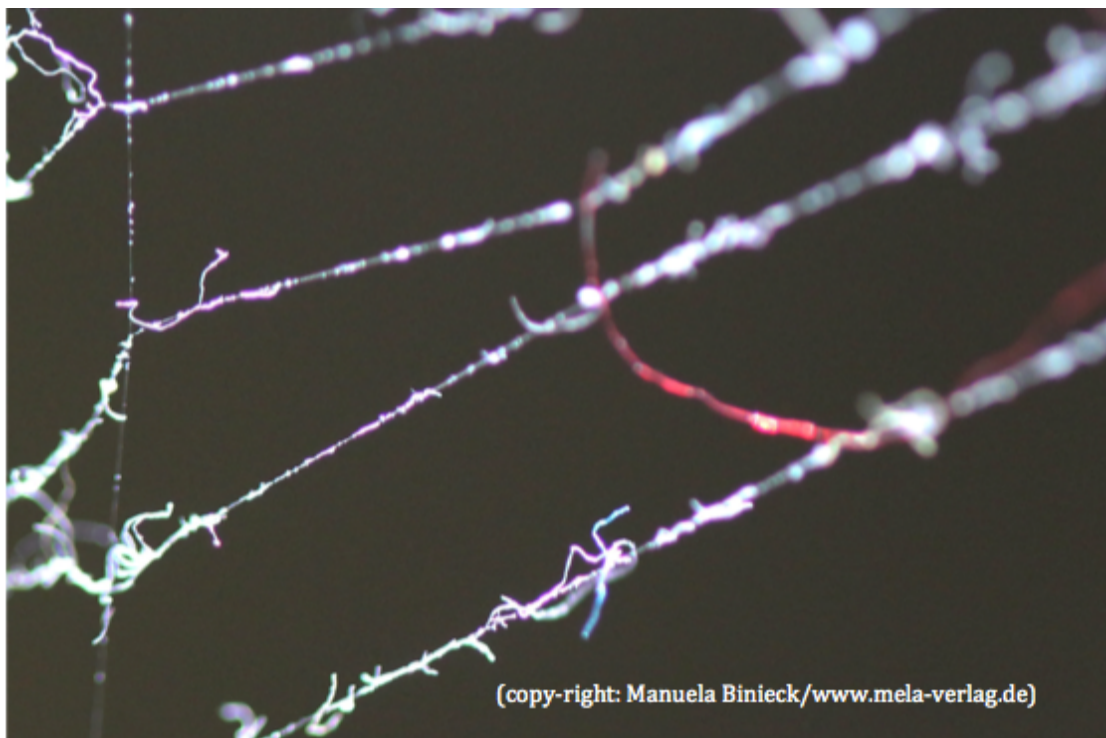
This is a private publication with no commercial background.  
Still, copyright fees for the pictures used need to be paid  
and sum up to an amount of several thousand dollars.

I decided to take this step, hoping  
that people who appreciate this work will be willing to  
contribute with donations to cover these copyright costs.  
If you feel like contributing, please use the paypal-account with  
the eMail: [kautzvella@gmail.com](mailto:kautzvella@gmail.com)

---



**fig. 2:** These fibers can be found in many places in nature. This is a screenshot from a film that shows that the fibers that were attached to a home-grown tomato react to body heat or the human bio-field and actively bend into the direction of the human body. This shows how easily infections can occur not only by breathing in, but also via the food chain.



(copy-right: Manuela Binieck/www.mela-verlag.de)

**fig. 3:** This is a spider web in front of the window of the photographer who contributed most of the pictures related to Morgellon fruiting bodies. The big red fiber is from a synthetic cloth that was hanging one floor above, the bluish and reddish phosphorescent fibers are of Morgellon size.





**fig. 4:** The same in dry condition slightly metallic looking fibers could be found on the floor of the apartment the patient was living in.



**fig. 5:** This is a form that can typically be found at the bottom of the tub after having a bath with alkaline supplements. Extracted from the skin, left over on the bottom of the tub after letting out the water.



fig. 6: This one was extracted from the faeces. It starts getting into shape. The mycelium forms an ovary. This is not random, it is a repeating structure, found in many, many pictures.

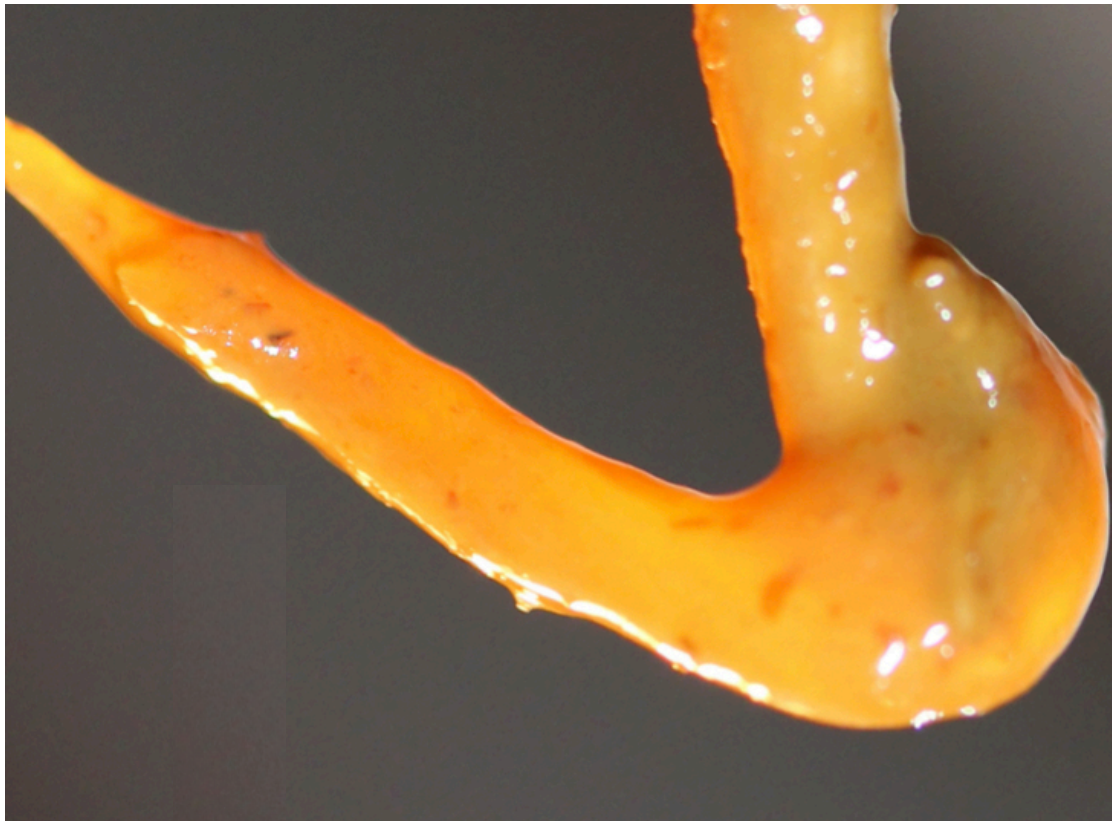


fig. 7: There seems to be a kind of interconnecting jelly, that unites the fibers to a closed tissue.





**fig 8: When the process is completed, one cannot identify single fibers anymore.**



**fig. 9: This single fiber of the fruiting body is much thicker than the original mycelium. The red structure from fig. 8 is probably hidden under mucus at the upper end of the structure. It just started growing, however it is disposed to form a more complex, geometrically shaped “mushroom”. So it needs to build up “tissue”...**



copy-right: Manuela Binieck/www.mela-verlag.de)

**fig. 10:** It is possible to see the single fruiting body fibers, but also the original ovary i.e. peduncle basis, red and shining. And one can start imagining the projected morphogenetic form.



copy-right: Manuela Binieck/www.mela-verlag.de)

**fig. 11:** Next development stage: it is still possible to see the ovary, however the single fibers are not visible anymore. The Morgellon builds a closed “mushroom”, has given it a strong and protective surface structure.



**fig. 12:** Now this one is pretty developed, looking still young and tidy. Also still showing the red ovary. Some kind of umbilical cord is attached to the belly.



**fig. 13:** This one looks a bit older, the interesting thing is that it seems to be able to bend in the middle, let's call it around the "hips". In the position of the eye it starts developing a black spot, later this black spot will carry the spores.

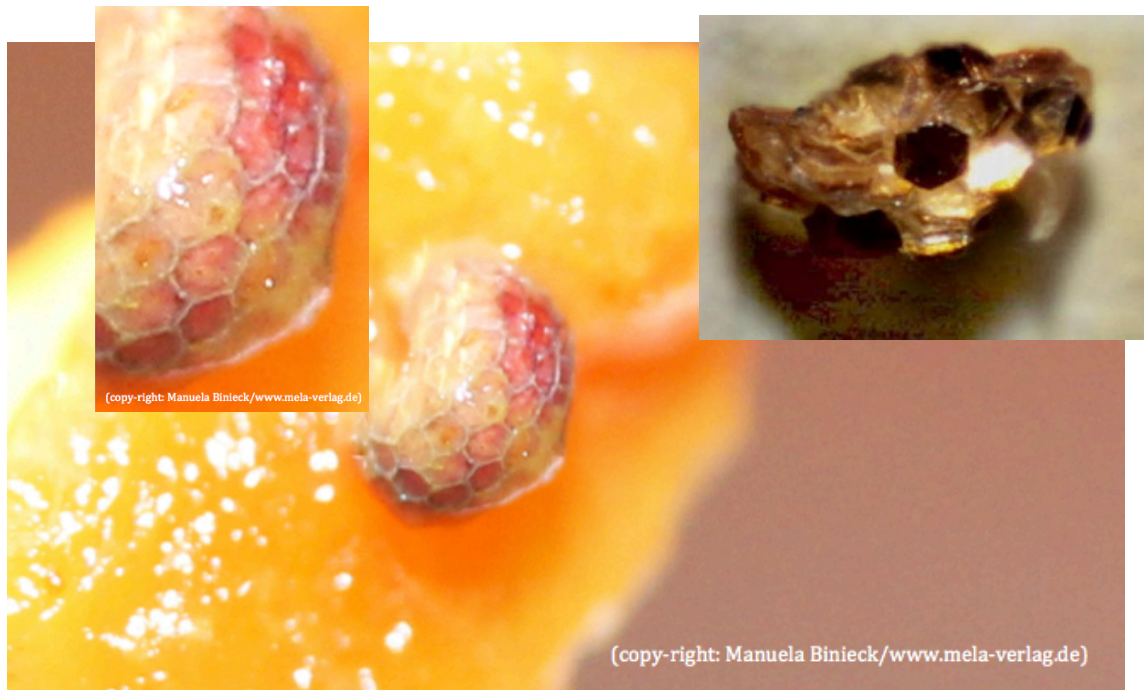




(copy-right: Manuela Binieck/www.mela-verlag.de)  
fig. 14: This one is fully grown, smooth surface, no single fibers visible anymore. The order of fungi is able to mimic the shape of higher developed vertebrates. Again with an umbilical cord.

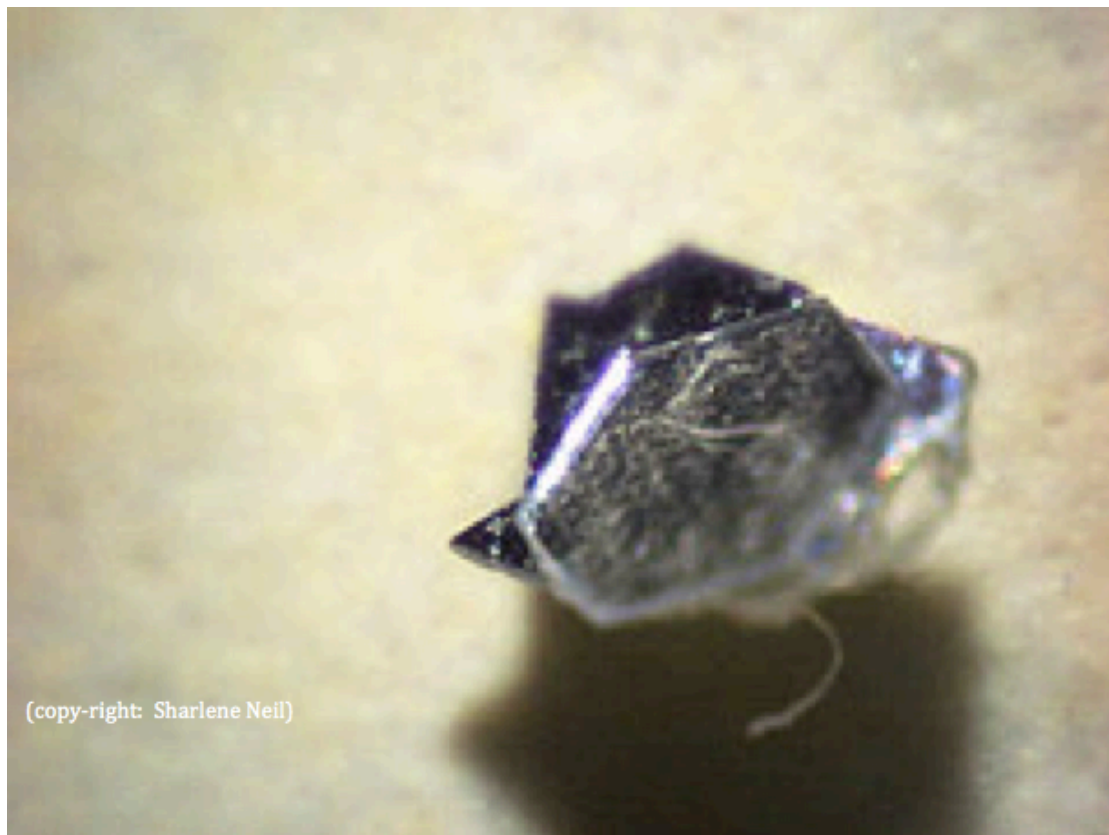


(public domain)  
fig. 15: This is a human embryo of same age (28 days)... The patient always talked about the tail and the duck-like head, called the little ones “rats”. She also said her instincts related to them as to children. These are mushrooms but they seem to carry the morphogenetic field of humanoid babies. But it is only the outer shape and the soul, morphological and bio-energetic mimicry.

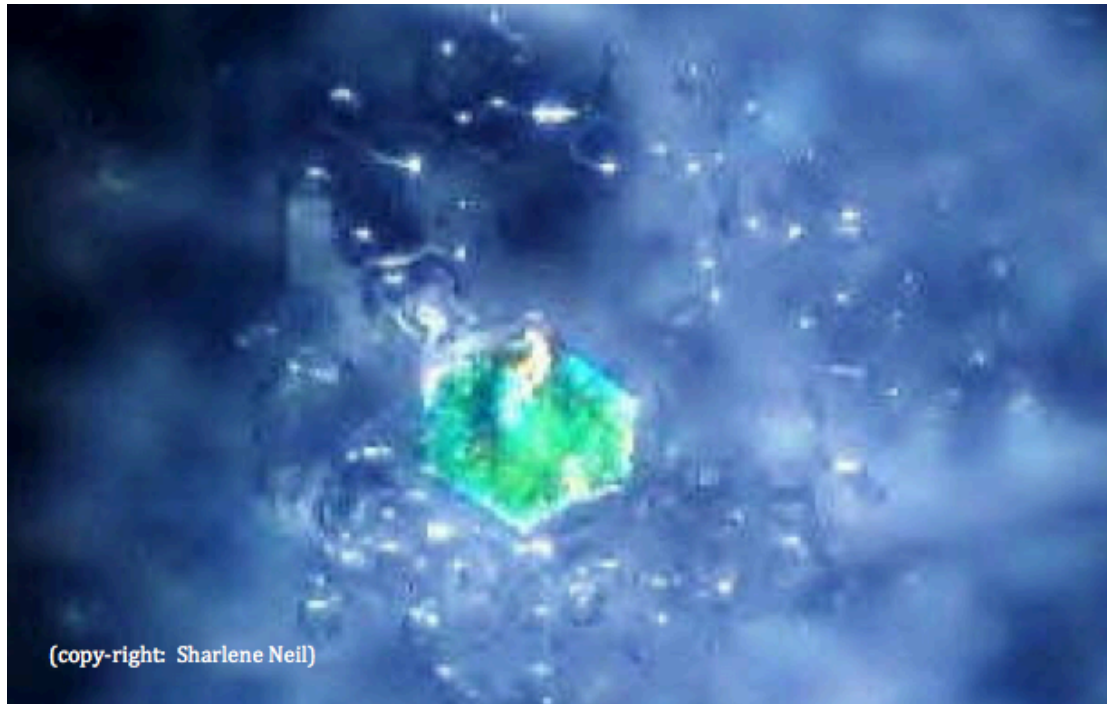


**fig. 16: If one looks for organs one just find two. The red jelly-like ovary, and this one... carrying the spores.**

The shape of the pattern on the surface is of significance. The morphogenesis of this insect eye very likely is an integral part of the fungus that naturally is specialized on insects as hosts, thus having his own reproductive organ in the shape of an insect eye. It doesn't resemble the human eye. Still, in the shape of the embryo-like structure it always appears in the head, where the human eye should be placed.



**fig. 17: The fungus is using a hexagon to protect and cover the spore. Later the baby generation of Morgellons grows out of the hexagon.**

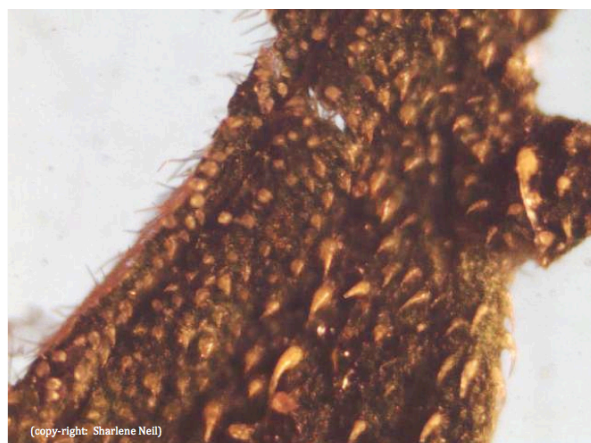


**fig. 18:** The second generation of Morgellons forms new mycelium. This picture is from a petri dish showing new mycelium spreading from the hexagon.

There is an additional aspect to the Morgellon fruiting bodies: they seem to display either male or female characteristics associated to spiders.



**fig. 19-21:** The left picture displays a typical female form with “ovaries” lining up red cells. The male form does not show these red cells but in the phase of moving from the stomach to the lower intestines it sets free a bulb resembling the sperm-containing bulbs of spiders. During this phase it produces a green skin like surface, that peels off. Possibly it is a protective layer that is necessary to survive the acidic environment in the stomach.



**fig. 22:** Also, in a single case, there was real spider-type exoskeleton extracted from the skin of a Morgellon patient, showing both hair and thorns.



## **ENVIRONMENTAL MEDICINES APPROACH TO GEOENGINEERING-INDUCED DISEASE**

As it looks like, the Morgellons are not-cataloged close relatives or a genetically modified version or crossbreed of *metarhizum anisopliae*, *metarhizum acridum*, *metarhizum majus* or *beauveria brongnartii*, all out of the order of the *entomophthorales*. Most forms of this fungus order are natural enemies of insects. When they infect insects, i.e. manage to enter their body, the fungus spreads within the body, basically eats the insects from the inside, grows a fruiting body that resembles the insect in shape and size, and then forms spores and tries to infect other insects. There are two special abilities in this biological order to support the overall concept that also plays a role in the Morgellons disease.

1. The fungi are able to assimilate the DNA of their victim, integrate it, multiply it, and build up a DNA cluster that creates a morphogenetic field that resembles the victims morphogenetic field. This morphogenetic resemblance might have two goals: It might fool the bio-energetic part of the immune system of the victim. The fungus appears to be part of the victim. There is no reason for the immune system to attack it. Maybe this DNA integration and biofield-generation has a further goal: to attract more victims by morphogenetic resemblance and sexual attraction on field level.
2. The second obvious goal is to attract and infect more victims by real life mimicry. With the morphogenetic field of the victim the fungus is able to form a “mushroom”, a fruiting body that resembles the original blueprint of the victims DNA in form and size. With insects you will have a mushroom that grows in the form of the insect that it just had killed. As a secondary feature the fungus is even able to integrate parts of the exo-skeleton of the victim by recognizing the surface structure and integrating it into its own body structure. This especially is the case with the eyes, the area where the spores are located, forming structures glowing in cold light that make the insect look alive. By this mimicry of living insects they eventually find a secondary host in birds eating the infected insects. This class of fungi has been widely used to genetically engineer myco-insecticides.

To be able to assimilate the victims DNA into its own morphogenetic scheme this order of fungi integrates DNA of the victim into the mycelium, and starts to reproduce it as if it was its own DNA.



**fig. 22-23: Metarhizum majus as well as Beauveria are natural enemies of insects and have the ability to mimic the morphogenesis of the host by assimilation of the hosts DNA. When it infects insects, i.e. it manages to enter their body, the fungus spreads within the body, basically eats the insects from the inside, builds a fruiting body exactly in the shape of the insect, integrating the exoskeleton of the insect as part of its “fruiting-body”, and then it surfaces again, forms spores and tries to infect other insects.**

According to research done by the Carnicom institute, Morgellons have been found to carry red cells within their fibers, cells with the ability to multiply out of the context of the human body. The cells have also been found as an aerosol coming down from the sky. They have been labeled red human blood cells by Carnicom research. This opens the possibility that the Morgellon fungus does not replicate human DNA, but instead multiplies a different, genetically engineered genome that could be designed in any manner needed, including the possibility to represent crossbreeds that would never survive as real beings. Still, the function of these cells is not fully understood.

### **3.2. Morgellon infection and autism**

Autistic children have been found to have “parasites” in the lower intestines, that DNA-wise display a mixture of fungus, insect, worm and human DNA – comparable to the Morgellon findings. Macroscopically many intestinal parasites found could be identified; still researchers talk about one hitherto unknown parasitic species. Just like with Morgellons, these parasites show a phase of plaited white fibers, before they form a closed, skin-covered, snake- or worm-like morphogenesis. An interview with people that treated high numbers of autistic children also showed that one of the autistic children extracted hexagonal photonic plasmonic crystals, which is a clear sign of a Morgellon infection. The different morphogenesis’ of the structures mistaken as intestinal parasites, can be explained by the aspect of the pseudo-morphogenesis. In many cases (as orally reported by the researcher Kerri Rivera) the treatment and removal of these rope-worms alongside with other parasites lead to a significant improvement of the autistic condition. Very similar to patients with the Morgellon-condition, autistic children often are able to sense or see the spiritual realm hosting etheric beings. Some of them directly show what they see in artwork, sometimes it is expressed in words – reporting on snakes inside the body – or reflected in special habits like a preference for snake-toys, that seems to be so common that companies offer rattling, mechanic snakes especially for the demand of families with autistic children.

### **3.3. Suggesting an Interpretation of the Aspect of Delusional Parasitosis**

The feeling of insects crawling on and under the skin is a widely spread symptom of Morgellon infections. The same symptom is also known from heroin addicts, which report crawling entities mainly in the legs. It has been reported that in some cases these sensations could intentionally be passed on to non-infected persons. Within our own research there were four cases, in which the transmission of the phenomenon possibly took place with non-involved neighbors. To gather more detailed information on this phenomenon, we interviewed two patients that had established an intense relationship to this phenomenon. We are aware that their perception is neither average, nor representative. Still, we decided to utilize the special access these patients had to be able to get a more detailed picture and to be able to formulate an admissible hypothesis, which later might be verified either empirically or within a hermeneutic approach by significant coherence with other findings.

In one case the following phenomena were reported:

- cyclic outflow of fruiting bodies every 28 day synchronized to the female cycle.
- During the outflow-days heavy headaches caused by the sensation of a pulsed extraction of energy flowing from the head to the intestines.
- Motherly instinct toward the fruiting bodies, similar to the feelings towards an aborted fetus.
- Hundreds of invisible insect-like creatures subjectively felt moving on and under the

## ENVIRONMENTAL MEDICINES APPROACH TO GEOENGINEERING-INDUCED DISEASE

skin.

- Feeling of being mind-controlled, including heaving transmitted erotic dreams with phantasies that felt like not suiting the taste, character and habits of the patient.
- Intensified feeling of penetrating mindcontrol on days with persistent contrails.
- Cases of madness in the close neighborhood with people loosing their mind sitting next to the heating pipes knocking on the pipes all day (repetitive in two distinct cases, a third case was banging a door all night.)

The second case we found worth mentioning was a clairvoyant patient who painted portraits of these delusional parasites. The painting relates to a few aspects of the spider-biology displayed by the fruiting body. However, on a cultural level these paintings also relate to a rather high number of characters known from different mythologies.



fig. 32: Delusional parasite according to the clairvoyant perception of a Morgellon patient.

The picture relates to the following mythologies:

- the mythology of Chtulhu, especially in the new age interpretation drawn by the artist Zarano, who published an illustrated art-work replication of John Dees encoded version of the Necronomicon. It displays the spider/human crossbreed morphogenesis as well as the one eye in the middle of the forehead. The public awareness of this mythology revived due to the semi-documentary work of J.P. Lovecraft who described black-magic cults in eastern Europe. Interestingly, the artwork of Zarano shows a second entity that resembles a human/snake crossbreed.
- It relates to Jahbulon, the god of masonry worshiped by freemasons, a cult that dates



## ENVIRONMENTAL MEDICINES APPROACH TO GEOENGINEERING-INDUCED DISEASE

back to Egyptian times.

- To the mythology of the Gog and Magog, described by gnostic scripts dating back five to six thousand years.
- Paracelsus taught that the spider was the medium for a powerful but evil force, which the black magicians used in their nefarious undertakings<sup>x</sup>.
- It relates to the machine world in the matrix trilogy.
- The Morgellon biology is accurately described in the novel Andromeda published by Michael Crichton 1969, displaying both fibers and hexagons in text drawings, suggesting that this as an invasive attempt to assimilate mankind by an alien species.



fig. 33-37, from left to right: Jahbulon, the god of masonry. The invasive “bug” that was introduced into Neos body to spy and mindcontrol him in Matrix I. Also, the aspect of light parasitism is reflected by the plot of the film. Second line: spider/human crossbreed demon as well as snake/human crossbreed from the art-work replica of John Dees necronomicon by Zarano.

Similar artwork is produced by clairvoyant grownups with the ability to see the autism-related snakes also known as Tummo- und Kundalinie-Snakes from the Asian tradition.

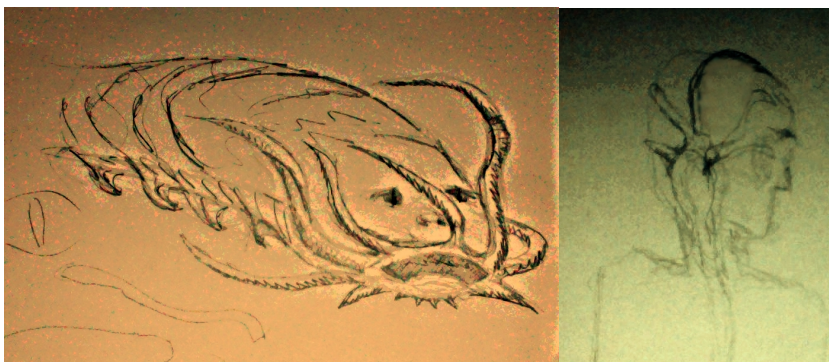


Abb. 38, 39: Intersubjective appearance of the Tummo- (big picture) und der Kundalinisnake (small picture), as seen during the extraction in a shaman ritual.

<sup>x</sup> Manly P. Hall: The Secret Teachings of All Ages: An Encyclopedic Outline of Masonic, Hermetic, Qabbalistic and Rosicrucian Symbolical Philosophy. San Francisco, H.S. Crocker 1928. P. 222.

## **ENVIRONMENTAL MEDICINES APPROACH TO GEOENGINEERING-INDUCED DISEASE**

It is worth mentioning that especially the Arabic tradition of perceiving demons, that found its purest expression in the Necronomicon, also describes exactly two demonic species, the gog and magog, of which one is a human/spider, one a human/snake crossbreed.

Of course it cannot be determined how far the single mythologies and plots produced by creative writing interrelate in the sense of copying ideas from each other.

The most scientific approach to bring some coherence to these findings seems to be the approach that creativity might be caused by three different effects:

- pure phantasy
- a mythological realm of available inspiration, that is offered by and derived from the collective field of consciousness. Best example would be the myth/pattern of romantic love we all tap into at times.
- the ability of humans to simply see truth including truth about non-visible realms by some kind of clairvoyance, while experiencing this ability as being connected to the stream of inspiration during a creative act.

Although most of the Morgellon victims had no idea of the mythological figures resembling their subjective perception, their visions had a high coherence with these mythologies. The most striking detail is the third eye found both with spiders and snakes. This cancels out the first possibility of being pure phantasy.

The second possibility projects the plot into a field of collective consciousness that is strong enough to be the foundation of masonry and coherent individual delusional perception of this mythological realm to a state that affected individuals experience this realm as being real. The affection apparently occurs independently of former belief systems.

Whoever is willing to believe in the existence of astral realms and demons inhabiting these realms, as well as humans serving these demons, might understand the Morgellons disease as a technique to spawn the demonic presence on this planet by creating demon-babies by fungi growing the morphogenesis of a genetically designed DNA. The fruiting bodies then die off; the "soul" of the creature survives as a demon. This would be out of the perspective of belief systems. Out of the perspective of science demons would be debunked as biotechnologically created programs feeding on human biophotons while being part of a quantum-computing based AI forming a kind of artificial hive consciousness.

Regarding other facts like skyrocketing autism-numbers, which in fact are children driven out of their bodies leaving the body behind as an empty shell, ready to be taken over and possessed by demons, one might follow Michael Crichton's novel *Andromeda* and consider that we are facing an attempt of a complete assimilation of mankind by demonic entities, in other words by an artificial intelligence controlling individualized administration programs that over-write and manipulate human consciousness. In this context we should consider the possibility that Satanism, a force present in many royal families, in the Vatican, the banking dynasties, in most western political elites, is driving exactly this agenda. The historical line from black magic to transhumanism is given. It can be traced from two major families involved into the black tradition, the Rothschilds and the British crown, via their foundation of the Tavistock Institute and the institute's offspring within the international intelligence community, which today is leading in transhumanism.

I remember a bus drive from Zagreb to Munich, over night, with a pair of parents on the back seat carrying an autistic girl with them, maybe age 4. The girl was bound tight to the chest of her father, with the back to him, her arms and legs moving like the wings of a captured insect, releasing a complete inhuman scream every 15 seconds. Eight hours long.



#### **4. Differential Diagnosis**

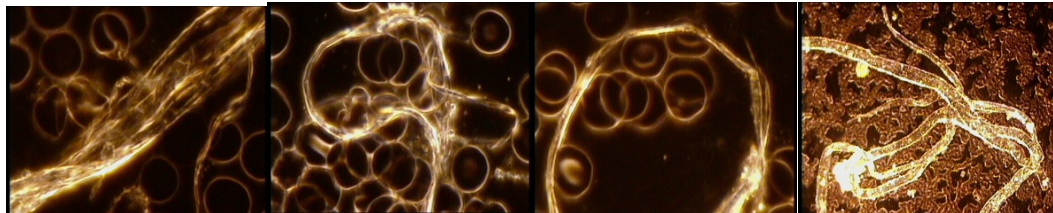
Morgellon patients normally are diagnosed with delusional parasitosis and are treated with psycho-pharmaceutics. The fibers in open lesions are normally diagnosed as fibers from cloth, the cause of the lesions is considered to be self-destructive behavior. The fruiting bodies are normally diagnosed as food left-overs.

To give physicians some tools to diagnose this disease correctly we gathered some visual material. Skin conditions can occur but do not necessarily occur.



**fig. 40-41: Typical skin lesions with visible fibers growing under the skin.**

Dark field microscopy of the blood can show the fibers in the blood, but the blood does not necessarily show fibers.



**fig. 42-45: Dark field microscopy showing typical Morgellon fibers in the blood stream.**

A third obvious sign for a Morgellon infection can be the appearance of pseudomorphous parasites. Normally they do not come out as beautiful and clean as the ones shown in chapter 3. Also, the morphogenesis varies. With adults they appear mostly shrimp-shaped, or as multiple Siamese twins of these shrimps, with autistic children pseudomorph fruiting-bodies come out as “rope-worms”.



**fig. 46-47<sup>xi</sup>: A Morgelon fruiting body hiding within the feces, well washed “rope-worms” found with autistic children.**

One possible way to diagnosis Morgellons is autonomous response testing (ART by Dietrich Klinghardt) or by radionic testing (Institut für Infopathie UG:, Radolfzell). It is helpful to also test on cryptopyroluria, acidification, pathogenic candida-forms, Lyme disease and heavy metal pollution, to verify whether the typical underlying conditions are given. Due to a high infection rate, when these conditions are given, it is very likely that the Morgellon organism is present in the patient, even if it does not show any visible symptoms.

With a given infection, a two hour long hot bath with soda and alfalfa will trigger a Morgellon exodus from the skin, later the fibers can be filtered out from the bath water and can be analyzed quantitatively. Another practicable test to determine a given Morgellon-infection is by verifying the presence of luminescent fibers. The best part of the body to test is the white of the eye. The test is done under black light. When no Morgellon infection is given, normally the white part of the eye should not show luminescence at all.

## **5. Discussion**

The timeloopsolution-consortium, a group of scientists including Ekkehard Sirian Scheller, the company biopure.eu and the author, has come to the conclusion that with many forms of mycosis the question if the infection develops heavy symptoms is subject to the chemical environment within the body, and to the vitality of the organs and the immune system. Following this opinion, the consortium believes that the best way to heal such infections without side effects is to readjust the biochemical environment within the body of the patient. According to this opinion it is not of primary importance to attack or kill the fungus, but simply to re-adjust the parameters of the system back to normal. These parameters are acidity, availability of certain minerals and vitamins in the body, the amount of toxins and heavy metals both circulating and deposited in the body and the balance of the candida environment. The condition of the environment in the human body is mainly subjected to the uptake of toxins from food and environmental pollution, by genetic pre-disposition and by chronic infections that influence the ability of the body to process food and detox itself. After having evaluated a number of interviews with heavy Morgellon cases, the consortium has identified a repeating pattern of previous diseases that seem to form an environment that supports the

---

<sup>xi</sup> Development stages of the “rope” human intestinal parasite Originally submitted to arxiv.org on Jan. 14, 2013, <http://arxiv.org/abs/1301.2845> Alex A. Volinsky, Ph.D., Nikolai V. Gubarev, Ph.D., Galina M. Orlovskaya, RN-C, Elena V. Marchenko, M.D., Ph.D.

## **ENVIRONMENTAL MEDICINES APPROACH TO GEOENGINEERING-INDUCED DISEASE**

outbreak of a heavy Morgellon infection. These previous diseases are: Cryptopyroluria, camouflaged candida and Lyme disease.

- Cryptopyroluria originally was a genetically caused disease that blocks the ability of the body to take up vitamin B6 and zinc. A lack of vitamin B6 and zinc affects the ability of the body to detox. 2-3% of the population was affected. Nowadays 30-40% of the population is affected by a secondary cryptopyroluria caused by mercury poisoning.
- Camouflaged candida is a mutation of normal candida-forms. They appear after the application of antibiotics and a follow-up treatment with anti-mycotics. They stop appearing in their normal yeast-like appearance, instead form isolated bubbles in the blood that camouflage themselves by placing fungus-receptors on the outer surface of the bubble. The immune system hence loses its ability to recognize and attack these candida-enclaves. The c-candida lives from glucose only. By fermenting sugar it produces acids and various myco-toxins. According to Ekkehard Sirian Scheller, this c-candida additionally is associated to an under function of the liver, i.e. with a loss of the ability of the liver to detox itself and especially the nervous system. This especially concerns mercury. For the diagnosis of this special form of candida, the blood is analyzed under the dark field. From day three, when the red blood cells begin to die, the candida exits the red blood cell and form a protective acid shield around its organs. This shield looks like ice-crystals growing out of the dying cell.
- Lyme disease is known to produce a high variety and amounts of toxins and acids, as well as to use up essential minerals like magnesium.

In this context fungal infections with Morgellons appear in a different light. One could state that the fungi do not attack the body, but that the body takes advantage of the ability of the fungus to absorb and deposit toxins, especially heavy metals. With Morgellons this ability leads to the up-concentration of the blue and red nano-dyes within the fibers. On the long run this mechanism leads to a heavy mycosis and a complete intoxication of the human body with additional myco-toxins, acids and heavy metals.

Against this background the consortium advises to treat a mycosis caused by the mis-adjustment of the chemical environment within the body by readjusting this chemical environment. This especially concerns the treatment of the three common underlying diseases, cryptopyroluria, c-candida and Lyme disease, as well as the treatment of the acidity of the body and the detoxing of heavy metals.

As to special diets, food supplements and other alternative treatments we advise considering a vegan diet with ecologically grown food only. The aspect of ecologically grown food is not only important to guarantee the availability of nutrients but also to avoid any uptake of glyphosate. The introduction of Glyphosate in the US correlates with a Pearson correlation-coefficiency of 0.997 with the occurrence of autisms with children age 5 and thus seems to play a major role as one necessary condition for the occurrence of autism<sup>xii</sup>. Glyphosate is known to kill of all but one pathogenic coli bacterium, which disables the environment in the lower intestines to expel poisons from the body and take in nutrients. Also, Glyphosate blocks choline before it can be taken up by the intestines. Choline is responsible for the transport of nutrients & poisons, as well as neurotransmitters.

Due to the fact that up to now the Morgellons disease has not been officially recognized, the pharmaceutical industry has no legal frame to develop any treatment. The only products that can be offered legally are supplements or of energetic, radionic or infopathic character.

---

<sup>xii</sup> Genetically engineered crops, glyphosate and the deterioration of health in the United States of America. Nancy L. Swanson, Andre Leu, Jon Abrahamson and Bradley Wallet. Journal of Organic systems. Vol.9 No.2 (2014)

## **ENVIRONMENTAL MEDICINES APPROACH TO GEOENGINEERING-INDUCED DISEASE**

However, because of the lack of recognition of these methods it is forbidden to give advice on or advertise single products.

For the development of a healing protocol it is useful to widen the perspective and distinguish between the different biochemical environments affected, and between different ages of occurrence of medical conditions. In environmental medicine it is common to regard the biochemical environment in the lower intestines as being fundamental for the human health, because it regulates both the uptake of nutrients and the final step of detoxing. If the environment is disturbed, the patient faces malnutrition and starts to circulate toxins, which should be expelled from the body.

The secondary biochemical environment mainly concerns amount and type of fungi and bacteria in the system. It is addressed as the extracellular environment. This environment can be heavily affected by the use of antibiotics and antimycotics. During an antibiotic treatment many probiotic symbionts can be completely killed off, while a few pathogenic entities get the occasion to resettle the entire environment. If the pathogenic entities have enough time to establish a biochemical environment that supports their presence the patient is subject to a permanent change in the biochemical order.

With Morgellons we face such a shift in order with candida forms that disable the lymphatic flow in the liver and thus creates exactly the over-acidified and heavy metal polluted environment they need to stay dominant.

At this point there is a feedback to the environment in the lower intestines. The two dis-balanced system interact and create a condition that involves

- ADS, ADHS, Asperger and Autism when occurring at young age,
- it creates the Morgellon condition at mid-age, including symptoms of herpes, hay fever, skin conditions, asthma all being secondary detox-mechanisms

The third environment in the body that should be understood in a broader view on health is the intracellular system. It is researched and described as the Vitamin D axis, involving GC proteins, GCmaf, Vitamin D herpes and nagalase, all trying to access the Vitamin D receptors in the cells, which are regulating the function of the intracellular immune system.

In this context also old age and autoimmune disease, being a feature of the intracellular environment, can be understood as based on a distortion of the extracellular environment. The connection points are the herpes that occurs to detox fungi poisons and the GC protein production of the liver, that might be malfunctioning when the liver is disabled by candida. With old age disease, the body will tend to deposit toxins, rather than fight to expel them. This deposition finally damages the nervous system causing dementia, Alzheimers, ALS, Parkinson, Creutzfeld Jakob and MS.

As the latest development a new formula with the name Relusinum will be made available soon to disable the creation of bioenergetics entities and close the access to the realm of mythological experience. The infopathic remedy is currently in development and will be traded either by biopure.eu or directly by the Institut für Infopatie UG, Radolfzell.

## **6. Acknowledgements**

I want to thank all people who have contributed to this puzzle by mostly voluntary work, especially Cliff Carnicom and Sofia Smallstorm, I want to thank the victims who despite their suffering gathered the strength to document their condition, especially Jan Smith and Manuela

Binieck, and to all the people that, facing their own suffering children, did not give up the hope that autism is curable, to the point where solutions could be found, especially Kerri Rivera.

## **7. Literature cited in alphabetic order**

Arora, Dilip K.(ed.): Handbook of Fungal Biotechnology. Second Edition, Revised and Expanded.

Bridge, Paul D. (Associate Editors); National Bureau of Agriculturally Important Microorganisms. New Delhi, India. British Antarctic Survey Cambridge, United Kingdom Deepak Bhatnagar US. Department of Agriculture NewOrleans, Louisiana, U.S.A. MARCEL MARCEL YORK BASEL © 2004 by Marcel Dekker, Inc.

Hall, Manly P.: The Secret Teachings of All Ages: An Encyclopedic Outline of Masonic, Hermetic, Qabbalistic and Rosicrucian Symbolical Philosophy. San Francisco, H.S. Crocker 1928.

Karjoo, M.D., Rahim. U.S. Silicon Breast Implant Studies. American Medical Diagnostic Laboratories, Inc. Santa Ana, CA. © 1994

Leicester. Virus Replication. Microbiology @ Leicester: virology: Virus replication. Updated: October 22, 2004. "<http://www.-micro.msb.le.ac.uk/3035/3035Replicaiton.html>.

Staninger, Dr. Hildegard: FAR-INFRARED RADIANT HEAT (FIR RH) TYPE REMEDIATION FOR MOLD and OTHER UNIQUE DISEASES, RIET-1. Industrial Toxicologist/IH & Doctor of Integrative Medicine Integrative Health International, LLC 12235 E. Centralia St. Lakewood, CA 90715. © October 18, 2006 Presented at the NREP Annual Conference in Nashville, TN, October 18th, 2006 for the National Registry of Environmental Professionals. Glenview, IL, USA.

Staninger, Ph.D., Hildegard. Private Funded Independent Study on the Identification of Chemical and Biological Composition of Fibers from Morgellon Diagnosed Patients. Integrative Health International, LLC. Lakewood, CA © October 5, 2006. Laboratory Report: Fiber made of High Density Polyethylene (HDPE).

Swanson, Nancy L., Leu, Andre, Abrahamson, Jon, Wallet, Bradley: Genetically engineered crops, glyphosate and the deterioration of health in the United States of America. Journal of Organic systems. Vol.9 No.2 (2014) Twietmeyer, Ted. Is Morgellons Disease Caused by Chemtrail Spraying? <http://www.rense.com/general71/mmor.htm> © May 14, 2006.

Volinski, Alex A.; Gubarev, Nikolai V.; Orlovskaya, Galina M.; Marchenko, Elena V.: Development stages of the “rope” human intestinal parasite Originally submitted to arxiv.org on Jan. 14, 2013, <http://arxiv.org/abs/1301.2845>. Independent researcher Occupational Safety Ltd. (OOO“Bezopasnost Truda”), 32 ul. Koli Tomchaka, suite 14, St. Petersburg 196084, Russia, Department of Surgery, St. Petersburg City Hospital.

## **8. Graphics**

Fig. 1-21: copyright by Manuela Binieck, <http://www.mela-verlag.de>

Fig.: 22: source Sharlene Neil/Jan Smith

Fig. 23-24: copyright Wikimedia commons

Fig. 33: source <http://en.rightpedia.info/w/images/thumb/8/8e/Jahbulon.png/300px-Jahbulon.png>

Fig. 34: Copyright Warner Brothers Entertainment, source  
<https://joelwilliams825.wordpress.com/2014/12/31/the-matrix-mise-en-scene/>

Fig. 35-37: Copyright M.R. Zarano, source: <https://es.pinterest.com/shadow9309/lovecraft-and-the-real-necronomicon/>

Fig. 38-39: Copyright by the author

Fig. 40-41: source Sharlene Neil/Jan Smith

Fig. 42-45: Stephanie Sisillia Scheller, Institut für Infopathie Radolfzell.

Fig. 46: source Sharlene Neil/Jan Smith

Fig. 47: source Kerry Rivera, Healing the symptoms known as Autism.

### **Medical disclaimer**

The information and reference guides in this paper are intended solely for the general information for the reader. The contents of this paper are not intended to offer personal medical advice, diagnose health problems or for treatment purposes. It is not a substitute for medical care provided by a licensed and qualified health professional. Please consult your health care provider for any advice on medications.